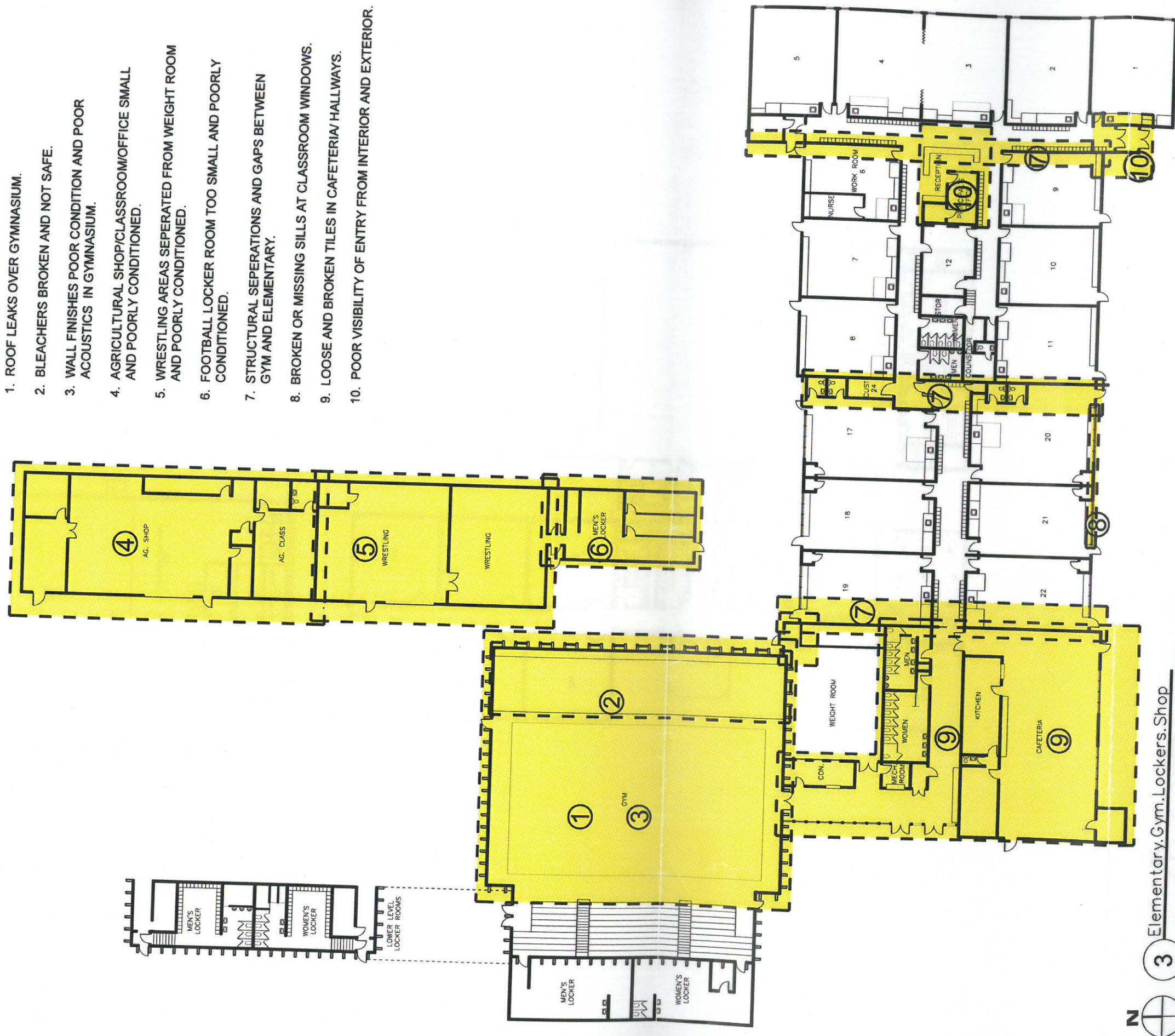


1. ROOF LEAKS OVER GYMNASIUM.
2. BLEACHERS BROKEN AND NOT SAFE.
3. WALL FINISHES POOR CONDITION AND POOR ACOUSTICS IN GYMNASIUM.
4. AGRICULTURAL SHOP/CLASSROOM/OFFICE SMALL AND POORLY CONDITIONED.
5. WRESTLING AREAS SEPERATED FROM WEIGHT ROOM AND POORLY CONDITIONED.
6. FOOTBALL LOCKER ROOM TOO SMALL AND POORLY CONDITIONED.
7. STRUCTURAL SEPERATIONS AND GAPS BETWEEN GYM AND ELEMENTARY.
8. BROKEN OR MISSING SILLS AT CLASSROOM WINDOWS.
9. LOOSE AND BROKEN TILES IN CAFETERIA/ HALLWAYS.
10. POOR VISIBILITY OF ENTRY FROM INTERIOR AND EXTERIOR.



3 Elementary.Gym.Lockers.Shop



# ELEMENTARY BUILDING - EXISTING CONDITIONS

CROWLEY COUNTY SCHOOL DISTRICT  
 SEPTEMBER 2008