

SAFETY AND SCHOOL ENVIRONMENT

Non-CSAP Course Offerings

Your School Offers	does	does not
• art.....	<input type="checkbox"/>	<input checked="" type="checkbox"/>
• drama or theater.....	<input type="checkbox"/>	<input checked="" type="checkbox"/>
• music.....	<input checked="" type="checkbox"/>	<input type="checkbox"/>
• physical education.....	<input checked="" type="checkbox"/>	<input type="checkbox"/>
• opportunity for civic or community engagement.....	<input type="checkbox"/>	<input checked="" type="checkbox"/>
• internet safety program.....	<input checked="" type="checkbox"/>	<input type="checkbox"/>
• International Baccalaureate.....	<input type="checkbox"/>	<input checked="" type="checkbox"/>
• extracurricular activities.....	<input checked="" type="checkbox"/>	<input type="checkbox"/>
• athletics.....	<input checked="" type="checkbox"/>	<input type="checkbox"/>
• career and technical education.....	<input type="checkbox"/>	<input checked="" type="checkbox"/>
• honors.....	<input type="checkbox"/>	<input checked="" type="checkbox"/>

Safety and Discipline

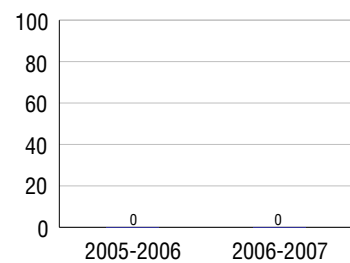
Safe schools are a top priority for parents, teachers, and communities. Your school safety and discipline record for the 2007-2008 school year is:

Type of Incident	Number of Incidents Reported	Percent of Total Incidents
Substance Abuse - Drugs		
Substance Abuse - Alcohol		
Substance Abuse - Tobacco		
Felony Assaults		
Fights	2	40.0%
Possession of Dangerous Weapons		
Other Violations Code of Conduct	3	60.0%

Student Attendance and School Calendar

2007-2008	Your School
Enrollment	120
Average Daily Attendance	112
Student Dropouts	0.0%

Dropout Rate



Student Information Over Time

	2005-2006	2006-2007	2007-2008
Student Enrollment Stability	93.6%	94.7%	95.0%
Students Eligible for Free and Reduced Lunch	72.1 %	74.2 %	74.2 %

For more information and further details about this report, visit www.state.co.us/schools
 Colorado Department of Education, 201 East Colfax Ave. Denver, CO 80203
Crowley County Ward Middle School
 0770/2054/M
 1001 Main . Ordway, CO 81063 . 719-267-9880
 10/20/2008

DISTRICT TAXPAYER'S REPORT

Sources of School District Revenue	2007	District Source of Funds 2007
Local Tax Contribution	\$612,460	
State Tax Contribution	3,076,538	
Federal Grants	413,437	
State Grants	418,823	
Private/Partnership Grants	11,044	
Other Discretionary Income	277,322	
Total District Operating Revenue	\$4,809,624	
Long Term Debt Proceeds	981,944	
Total District Revenue	\$5,791,568	
Total District Operating Revenue Per Pupil =	\$9,917	
Total District Revenue Per Pupil (Including Long Term Debt) =	\$11,941	
District Per Pupil Operating Revenue =	\$6,638	
State Average Per Pupil Operating Revenue =	\$6,080	

District Use of Funds	2007	District Use of Funds 2007
Instructional & Instructional Support	\$2,727,879	
Administration	494,833	
Building & Facilities Maintenance	571,405	
Operational Expenditures	375,837	
Debt Service	68,325	
Other Expenditures	144,214	
Total District Operating Expenditures	\$4,382,493	
Capital Expenditures	969,080	
Total District Use of Funds	\$5,351,573	

District Debt and Capital Construction & Equipment

Total Outstanding Bonded Debt	\$0
Average Annual Percentage Interest Rate on Debt	0%
Amount Raised from Most Recent Bond	\$0
Amount Spent on New Buildings During Last 2 Years	\$8,285

Accreditation

Accreditation is Colorado's primary accountability system, incorporating achievement levels, academic growth, achievement gaps, post-secondary readiness, improvement planning, and compliance. The state accredits districts and districts accredit individual schools.

District Accreditation Status for the 2007-2008 school year:

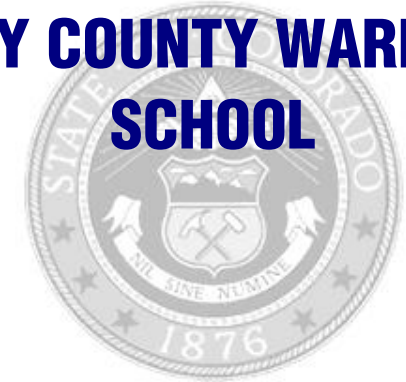
Voter Approved Funding Changes

Your community did /did not hold an election in November 2006

The following items have been approved by voters:

- TABOR Override
- Bond
- Mill Levy Increase

CROWLEY COUNTY WARD MIDDLE SCHOOL



CROWLEY COUNTY RE-1-J

<http://www.crowley.k12.co.us/>

School Accountability Report 2007-2008 School Year

School Performance Summary

Overall Academic Performance on State Assessments **Average**

Academic Growth of Students **Typical**

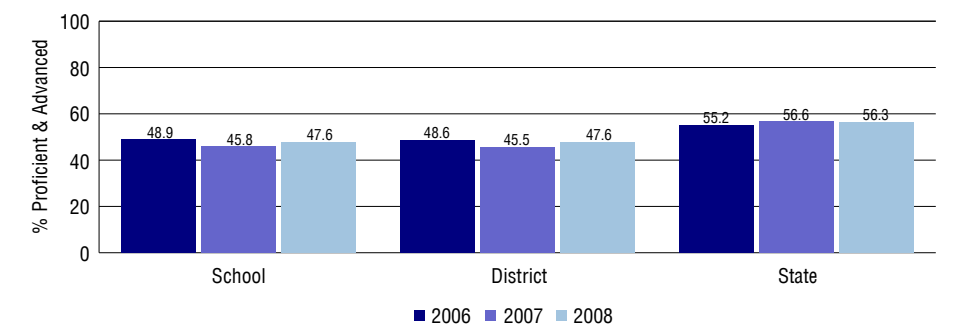
Overall Academic Performance on State Assessments

Each school in the State received a rating of "Excellent", "High", "Average", "Low", or "Unsatisfactory" for student academic performance based on 2007-2008 CSAP and COACT results. The rating is calculated using weighted percentages of each CSAP proficiency level for all content area and grade results for the school, as well as average COACT Reading, Writing, and Math Grade 11 results.

Academic Growth of Students

Each school in the State received a rating of "Low", "Typical", or "High" for student academic growth based on CSAP results. The calculation method is new for 2007-2008. The rating is calculated using student percentile scores matched over two years. More information about the Overall Academic Performance rating and Academic Growth of Students calculations can be found here: http://www.cde.state.co.us/cdeassess/SAR_Info.html.

Percent Proficient and Advanced for Middle Grades for All Content Areas



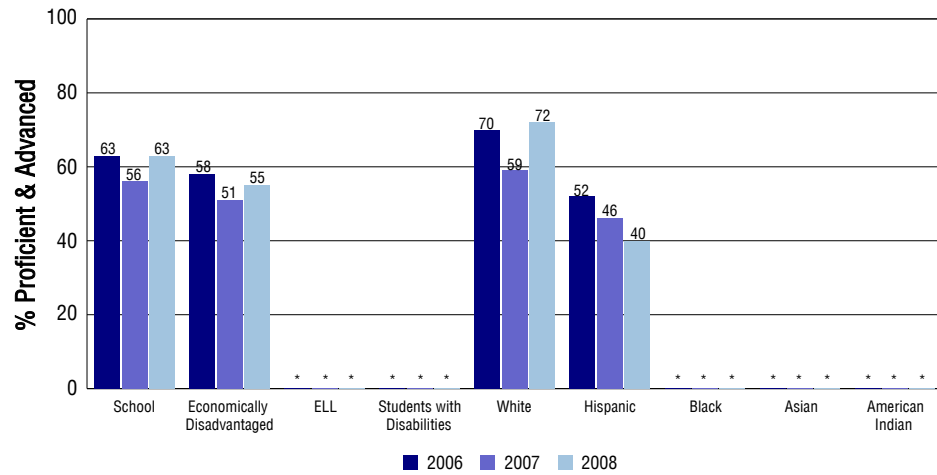
Student Test Scores Used For Calculating Overall Academic Performance

96.0%	Test Scores Counted
0.0%	Test Scores not used due to Language
4.0%	Test Scores not used due to New Student

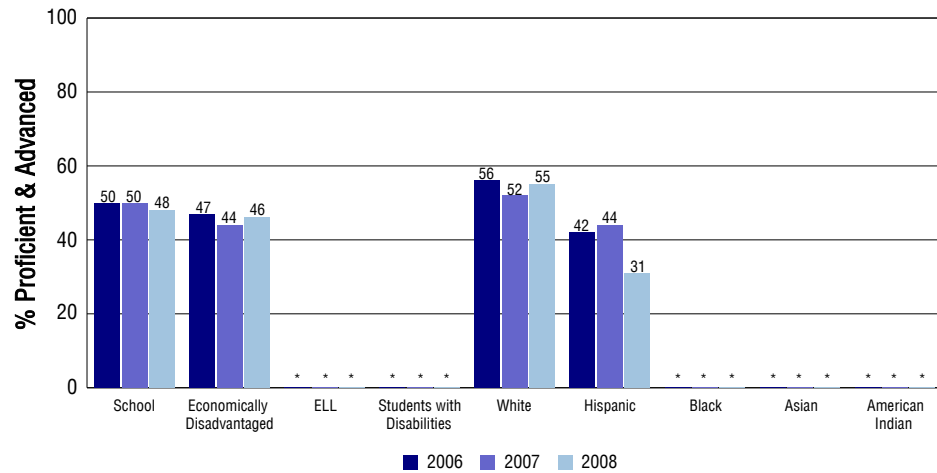
STUDENT PERFORMANCE

These graphs show the percent Proficient and Advanced trends over the past three years for Reading, Writing, and Math. Results are presented for the entire school for all reported grades as well as for different subgroups. Note: * indicates any group with less than 16 student results to be reported.

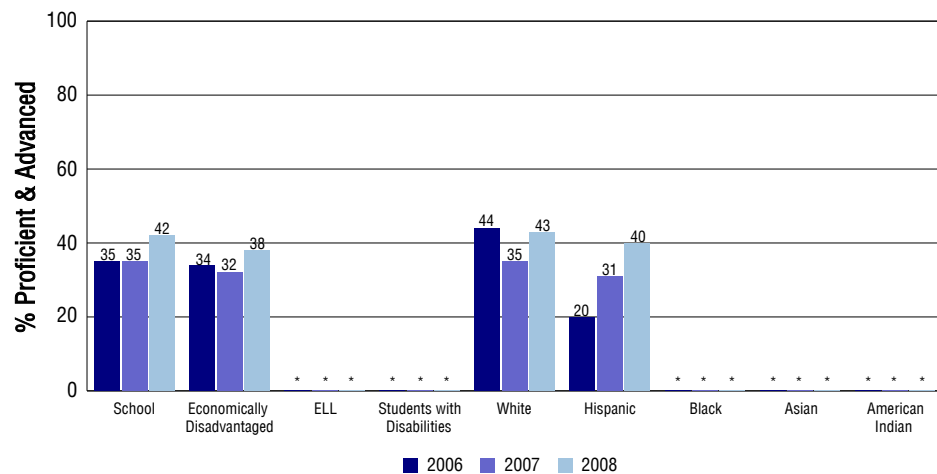
Reading



Writing



Math



SCHOOL INFORMATION

School Pride (as submitted by your district)

- State-of-the-art technology is incorporated into classroom instruction
- Daily after school homework/help sessions are available to students to provide individualized assistance with homework or other academic needs.
- Students may choose to participate in a variety of after school programs including dance, karate, science club.
- 99% of our teachers are Highly Qualified.

School Goals (as submitted by your district)

Our goals continue to focus on student achievement and the methodologies required to ensure that every student receives the best possible education opportunity we can provide. We will improve in the area of ensuring a safe and secure school environment by

No Child Left Behind - Adequate Yearly Progress

Did your school make AYP in reading? Yes Math? Yes
 How many targets does your school have? 24 Met? 24

Based on this school's academic performance, your child may be eligible for one or more of the following; ask your school if your child qualifies for:

Extra academic instruction either before or after-school, or in the summer
 Mentoring

For additional information regarding Adequate Yearly Progress please visit
<http://www.cde.state.co.us/FedPrograms/ayp/index.asp>

How Crowley County Ward Middle School Compares To Middle Schools Within A 75-Mile Radius

School	Program Type	Academic Performance	Academic Growth
Manzanola Junior-Senior High School(1)		Low	Typical
Jefferson Middle School(2)		Low	Low
Cheraw Middle School(3)		Average	Typical
Swink Junior-Senior High School(4)		High	Typical
Fowler Junior High School(5)		High	Typical
La Junta Middle School(6)		Average	High
Las Animas Middle School(7)		Average	Low
Edison Academy(8)	Online, Magnet	Unreportable	Unreportable
Edison Junior-Senior High School(8)		Excellent	No Rating
Karval Online Education(9)	Online	Average	Typical

1 Located in Manzanola 3J School District.
 2 Located in Rocky Ford R-2 School District.
 3 Located in Cheraw 31 School District.
 4 Located in Swink 33 School District.
 5 Located in Fowler R-4J School District.

6 Located in East Otero R-1 School District.
 7 Located in Las Animas RE-1 School District.
 8 Located in Edison 54 Jt School District.
 9 Located in Karval RE-23 School District.

ABOUT OUR STAFF

School Employment

Each year, your district reports to the Colorado Department of Education on the number of adults who work in your school, as well as the type of work they do. Last year, your school employed:

	Your School		District	
	Full Time	Part Time	Full Time	Part Time
Teachers	6	4	33	3
Paraprofessionals	2	0	11	0
Administrators	1	0	4	0
Other Professionals	1	0	2	1
School Support	1	0	14	7
School Counselors	0	1	2	0
School Librarians	0	1	1	0
Total Staff	17		78	

Students per Teacher Ratio

	Student Enrollment	Students per Teacher
Grade 6	33	16.1
Grade 7	43	17.1
Grade 8	44	17.5

Professional Experience of Teachers

	Your School	District
Average years of teaching experience	11	12
Percent of teachers teaching in the subject in which they received their degree	63%	75%
Number of teachers with Masters or Doctoral degrees	2	8
Teachers with 3 years or more of teaching experience	8	27
Teachers with less than 3 years of teaching experience	2	9
Number of professional development days	6	6

Salaries

	Your School	District	State
Average Teacher Salary	\$33,592	\$35,522	\$47,494
Average Administrator Salary	\$55,000	\$60,750	\$80,444

Principal: James Trainor

Number of years as Principal at this school: 2

Number of years as Principal at any school: 2